

This artifact is a postcard from Private (Pte) Harry William Manchester to his sister, Mrs. Elton Newman of Cottam, Ontario, Canada, that was written while in transit on a train, and posted from the train station at Truro, Nova Scotia, Canada, on July 16,

# Postcard to Mrs. Elton Newman - July 16, 1940

The Wartime Correspondence  
of Harry William Manchester

Harry William Manchester Descendant

---



## REVISION HISTORY

The revision history for this publication and project for this artifact is listed below.

Version Number	Date	Change
1.0	3/14/2020	Original Publication.

This page intentionally blank.

## INTRODUCTION

This document captures and publishes one piece of correspondence (hereafter, “artifact”) from the collection of World War Two correspondence of Harry William Manchester, of Essex County, Ontario, Canada. Harry spent six years in the Canadian Army, in Ontario, England, and as a prisoner of war held in Poland; and during that period wrote extensively to his relatives and friends. The extensive correspondence Harry wrote to his sister, Mrs. Elton Newman of Cottam, Ontario, Canada was preserved by her, and constitutes the bulk of this correspondence collection.

As correspondence, this artifact contains a wide variety of properties, which reflect its content, markings, and references.

The purpose of this document is to capture that content, markings, and properties, so that the artifact may survive in this published form or be transferred to another form, and also to preserve the timeline of historical events in the context of Harry William Manchester. Photographic images of the original parts of the artifact are included in this document, and the reader is encouraged to review those images.

## GENERAL DESCRIPTION

This artifact is a postcard from Private (Pte) Harry William Manchester to his sister, Mrs. Elton Newman of Cottam, Ontario, Canada, that was written while in transit and posted from the train station at Truro, Nova Scotia, Canada, on July 16, 1940.

## EDITOR’S COMMENT

This postcard was posted from the railway station at Truro, Nova Scotia.

## ADDITIONAL MARKINGS

None.

## CAVEAT EMPTOR

The editor has endeavored to provide the transcription of content below as an accurate depiction of the spelling, misspelling, grammar and prose of the original artifact, so that original practice and then-common usage is reflected in the transcript. This includes replication of any strikeouts or corrections in the original. However, the editor has had to apply an extensive amount of judgement and interpretation of the content of the original artifact. In the event, some marks on the original artifact may or may not be punctuation marks; they may be the result of dirt or smudges in the original.

In addition, many persons and locations are referenced within the content and markings, and the editor has endeavored to research and fully identify those persons and locations, within the properties associated with the artifact. However, the editor is constrained by “best available information” at the time this document is published.

Reader discretion is advised.

## CONTACT INFORMATION

The publisher may be contacted through email on the “Contacts” webpage at [www.HarryManchester.com](http://www.HarryManchester.com), or at email address: [Editor@HarryManchester.com](mailto:Editor@HarryManchester.com).

All reasonable queries will receive a response.

This page intentionally blank.

## TRANSCRIPTION OF ARTIFACT CONTENT

July 16

Dear Frances:-

Am fine. Hoping you are all the same almost ready to get off train. We have had a grand trip. Hope it's all this nice well see you later

As Ever

Harry M.

\*\*\* End of Transcription \*\*\*

This page intentionally blank.

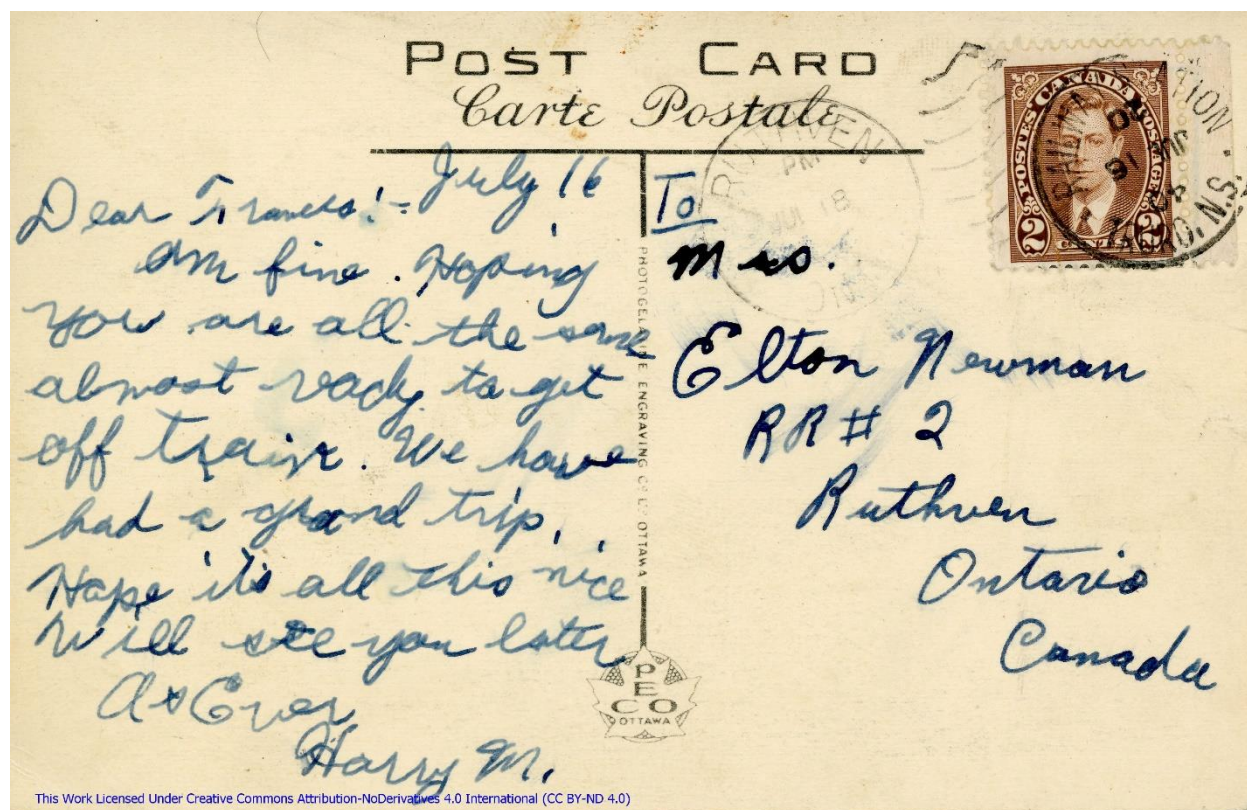


ARTIFACT IMAGES

File name: www-Img-1940-07-16-b-1.jpg



File name: www-Img-1940-07-16-b-2.jpg



## LICENSE INFORMATION

This work is made available to the general public under the Creative Commons Attribution-NoDerivatives 4.0 International (CC BY-ND 4.0)

The licensor cannot revoke these freedoms as long as you follow the license terms. You are free to:

**Share** — copy and redistribute the material in any medium or format

**Adapt** — remix, transform, and build upon the material for any purpose, even commercially.

The licensor cannot revoke these freedoms as long as you follow the license terms.

### UNDER THE FOLLOWING TERMS:

**Attribution** — You must give [appropriate credit](#), provide a link to the license, and [indicate if changes were made](#). You may do so in any reasonable manner, but not in any way that suggests the licensor endorses you or your use.

**NoDerivatives** — If you [remix, transform, or build upon](#) the material, you may not distribute the modified material.

**No additional restrictions** — You may not apply legal terms or [technological measures](#) that legally restrict others from doing anything the license permits.

The license and its terms and conditions may be viewed at: <https://creativecommons.org/licenses/by-nd/4.0/>

## ARTIFACT PROPERTIES

The properties contained within or associated with this artifact are listed below.

	Property	Value
1.	Artifact ID	Art-1940-07-16-b
2.	Artifact Title	Postcard to Mrs. Elton Newman - July 16, 1940
3.	Artifact Type	Postcard
4.	Artifact Description	Postcard to Mrs. Elton Newman from H.W. Manchester.
5.	Artifact Creation Date	July 16, 1940
6.	General Description/ Commentary	This artifact is a postcard from Private (Pte) Harry William Manchester to his sister, Mrs. Elton Newman of Cottam, Ontario, Canada, that was written while in transit and posted from the train station at Truro, Nova Scotia, Canada, on July 16, 1940.
7.	Origination Locale	Truro, Nova Scotia, Canada
8.	Origination Address (for correspondence)	None.
9.	Origination Postmark (for correspondence)	RAILWAY STATION TRURO N.S. 40 JUL 16 20
10.	Destination Address (for correspondence)	To Mrs. Elton Newman RR #2 Ruthven Ontario Canada
11.	Destination Postmark (for correspondence)	RUTHVEN PM JUL 18 40 ONT.
12.	Artifact Editor's Commentary	This postcard was posted from the railway station at Truro, Nova Scotia.
13.	Artifact Transcribed Content	Reference "Transcribed" section in this document.
14.	Artifact Categories List	Letter, Frances Newman, 1940, Amherst, Nova Scotia
15.	Content Reference (Tags)	Truro, Nova Scotia, train
16.	Categories Reference - Relationships	None.
17.	Categories Reference - Events	None.
18.	Categories Reference - Locations	Truro, Nova Scotia
19.	Categories Reference - People	None.
20.	Categories Reference - Organizations	None.
21.	Categories Reference - Facilities	train

	Property	Value
22.	Additional Markings	None.
23.	Associated Artifacts	None.
24.	Number of Components (by type)	1 postcard; total of 2 images.
25.	Artifact Component Reference	www-Img1940-07-16-b-1.jpg, www-Img1940-07-16-b-2.jpg
26.	Website Artifact Image -1.jpg	www-Img1940-07-16-b-1.jpg
27.	Website Artifact Image -2.jpg	www-Img1940-07-16-b-2.jpg
28.	Website Artifact Image -3.jpg	N/A
29.	Website Artifact Image -4.jpg	N/A
30.	Website Artifact Image -5.jpg	N/A
31.	Website Artifact Image -6.jpg	N/A
32.	Website Artifact Image -7.jpg	N/A
33.	Website Artifact Image -8.jpg	N/A
34.	Website Artifact Image -9.jpg	N/A

\*\*\* End of Artifact Properties \*\*\*

## PUBLICATION PROPERTIES

The properties associated with the publication project for this artifact are listed below.

	Property	Value
1.	Project ID	Prj-HWM-Art-1940-07-16-b
2.	Publication Status	Published
3.	Publication Description File ID	Art-1940-07-16-b-Description.docx Artifact-1940-07-16-b-Description.docx
4.	Initial Publication Date	3/14/2020
5.	Publication Version Date	3/14/2020
6.	Publication Version Number	1.0
7.	Publication Author	Harry William Manchester Descendant
8.	Publication Owner	Harry William Manchester Family
9.	Publication Publisher	Harry William Manchester Family
10.	Website Description File Name	www-Artifact-1940-07-16-b-Description.pdf
11.	Publication Location	www.HarryManchester.com
12.	Website Post Title	Artifact 1940-07-16-b - Postcard to Mrs. Elton Newman
13.	Website Gallery Title	Artifact 1940-07-16 - Letter to Mrs. Elton Newman
14.	Website Download Title	Artifact 1940-07-16 - Letter to Mrs. Elton Newman
15.	Artifact Creation Date ISO 8601	1940-07-16T00:00:00
16.	Publication Date ISO 8601	2020-03-14T00:00:00
17.	Publication Version Date ISO 8601	2020-03-14T00:00:00
18.	Publication Website	www.HarryManchester.com
19.	Publisher's eMail Address	Editor@HarryManchester.com

\*\*\* End of Publication Properties \*\*\*

\*\*\* End of Document \*\*\*