

This letter from Private (Pte) Harry William Manchester to his sister, Mrs. Elton Newman of Cottam, Ontario, Canada, was written and posted from Halifax, Nova Scotia, Canada, on July 21, 1940.

# Letter to Mrs. Elton Newman - July 21, 1940

The Wartime Correspondence  
of Harry William Manchester

Harry William Manchester Descendant

---



## REVISION HISTORY

The revision history for this publication and project for this artifact is listed below.

Version Number	Date	Change
1.0	3/8/2020	Original Publication.
1.1	3/12/2020	Updated the document to new format.

This page intentionally blank.

## INTRODUCTION

This document captures and publishes one piece of correspondence (hereafter, “artifact”) from the collection of World War Two correspondence of Harry William Manchester, of Essex County, Ontario, Canada. Harry spent six years in the Canadian Army, in Ontario, England, and as a prisoner of war held in Poland; and during that period wrote extensively to his relatives and friends. The extensive correspondence Harry wrote to his sister, Mrs. Elton Newman of Cottam, Ontario, Canada was preserved by her, and constitutes the bulk of this correspondence collection.

As correspondence, this artifact contains a wide variety of properties, which reflect its content, markings, and references.

The purpose of this document is to capture that content, markings, and properties, so that the artifact may survive in this published form or be transferred to another form, and also to preserve the timeline of historical events in the context of Harry William Manchester. Photographic images of the original parts of the artifact are included in this document, and the reader is encouraged to review those images.

## EDITOR’S DESCRIPTION/COMMENT

This artifact is a letter from Private (Pte) Harry William Manchester to his sister, Mrs. Elton Newman of Cottam, Ontario, Canada, that was written and posted from Halifax, Nova Scotia, Canada, on July 21, 1940.

This letter was screened by military authorities under war-time censorship controls. As a result, a) Harry redacted his location from page one of the letter, and b) delivery of the letter was delayed by military authorities.

## ADDITIONAL MARKINGS

The front of the envelope is stamped: “TRANSMISSION DELAYED FOR PURPOSES OF SECURITY” and the military censor annotated the front of the envelope with “Censored [censor’s initials] [illegible].

## CAVEAT EMPTOR

The editor has endeavored to provide the transcription of content below as an accurate depiction of the spelling, misspelling, grammar and prose of the original artifact, so that original practice and then-common usage is reflected in the transcript. This includes replication of any strikeouts or corrections in the original. However, the editor has had to apply an extensive amount of judgement and interpretation of the content of the original artifact. In the event, some marks on the original artifact may or may not be punctuation marks; they may be the result of dirt or smudges in the original.

In addition, many persons and locations are referenced within the content and markings, and the editor has endeavored to research and fully identify those persons and locations, within the properties associated with the artifact. However, the editor is constrained by “best available information” at the time this document is published.

Reader discretion is advised.

## CONTACT INFORMATION

The publisher may be contacted through email on the “Contacts” webpage at [www.HarryManchester.com](http://www.HarryManchester.com), or at email address: [Editor@HarryManchester.com](mailto:Editor@HarryManchester.com).

All reasonable queries will receive a response.

This page intentionally blank.

TRANSCRIPTION OF ARTIFACT CONTENT

~~XXXXXXXXXXXX~~

July 21/40

Dear Frances:-

Received your letter to-day. And was sure glad to know that you got the letter I wrote on the train

You asked me when we left camp. It was on Sun. note. A week ago to-nite. It sure don't seem that long thou. Our trip was really swell on the train & the scenery was beautiful. We were on the train 2 days & nites & have been here the rest of the time. I hope we soon leave thou.

I guess this is the day I was supposed to meet you in London. Well I hope you had a nice picnic of it. And also wish I were there with you. Onn. wanted me to get my pass from Fri. nite instead of Sat. Cuzz' Sat. was Ross' birthday & He & Marriane Jap & his G.F. were going to Rondeau to the dance & wanted her & I to go with them. But of course her plans were spoiled the same as all the rest of mine too.

There isn't much you can send me right now. Franc unless it's cigarettes. And I can ~~buy~~ buy them cheaper than you. So there isn't much use. I wrote La Verne last nite & I've lost her address. But I sent it to 305 Ferris. I hope it's right. I have lost Wilf & Dots address too. I'm getting terribly carless.

Boy it sure is lonely around here to-day. Wish we were eating some of those good old chicken dinners that we used to have. But I guess I'll spend a quite a few days like this before I get back.

But I'll sure have a whale of a time when I get back.

How are the girls. I suppose they're having a good time thru their holidays? I have spilled pop all over this paper.

Well it's getting close to supper time & there isn't much more I can say. So I'll close for this time.

Lovingly

Brother Harry

P.S.

I'll ~~am~~ always be looking

For your letters

Don't forget to send them

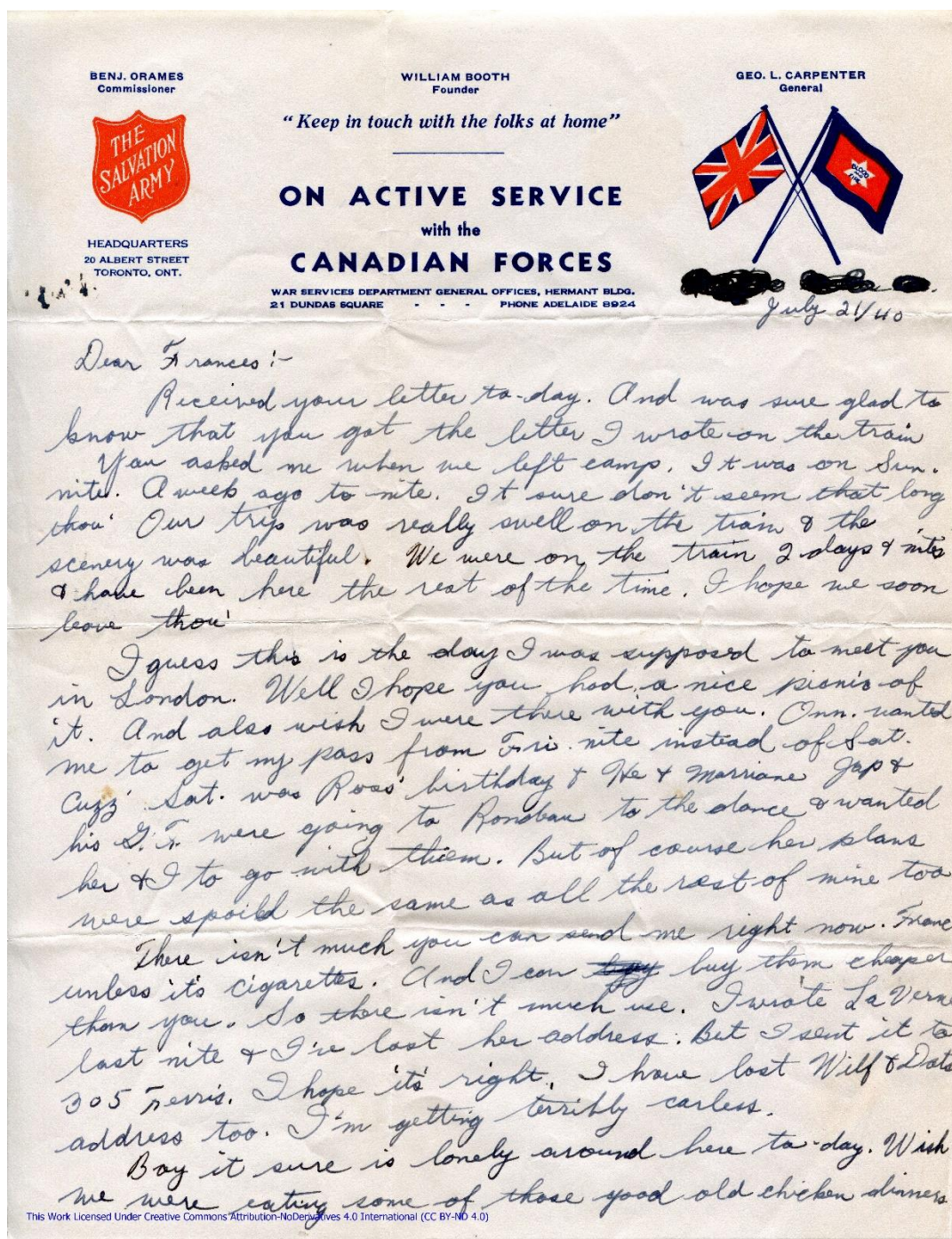
to Base P.O.

\*\*\* End of Transcription \*\*\*

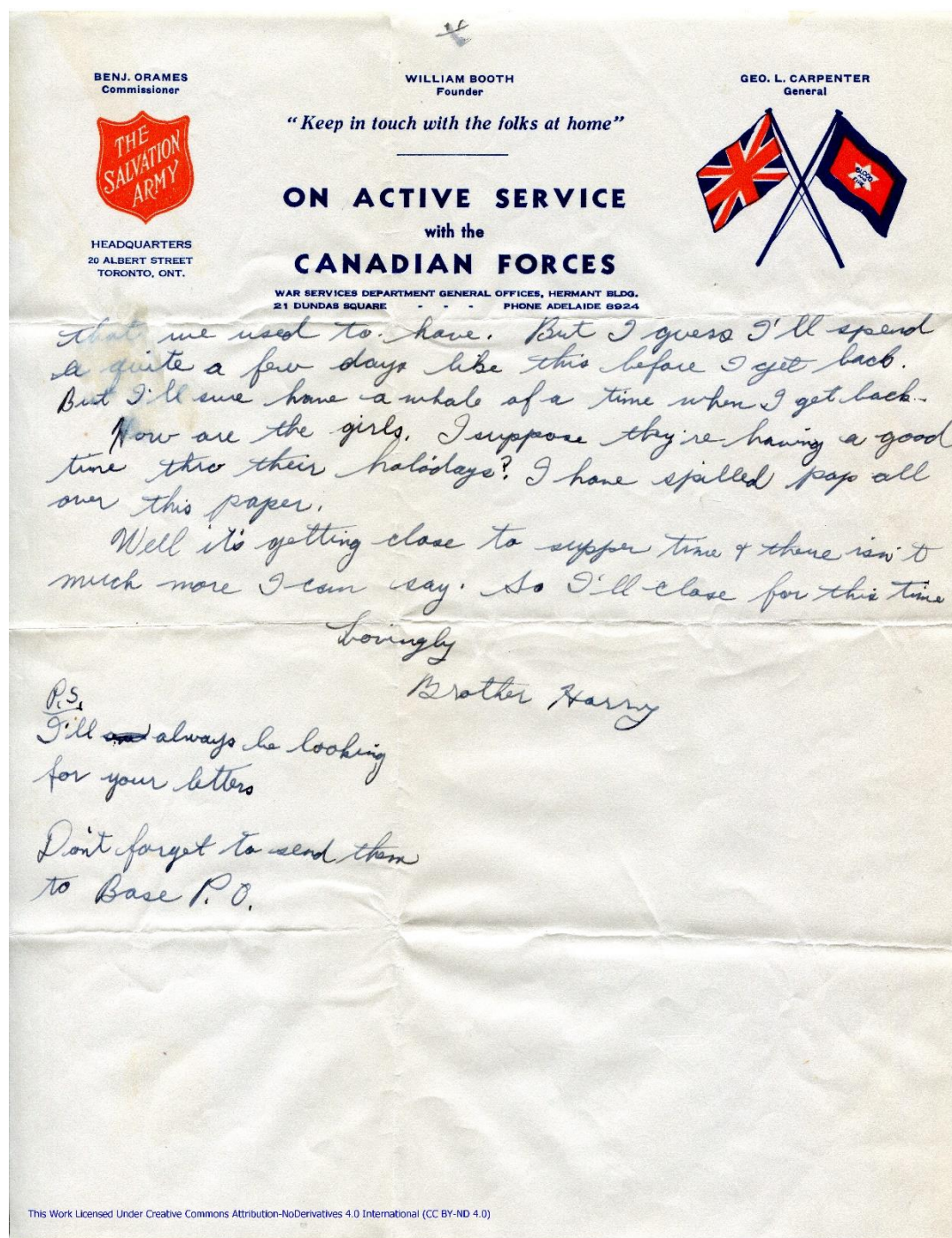
This page intentionally blank.

## ARTIFACT IMAGES

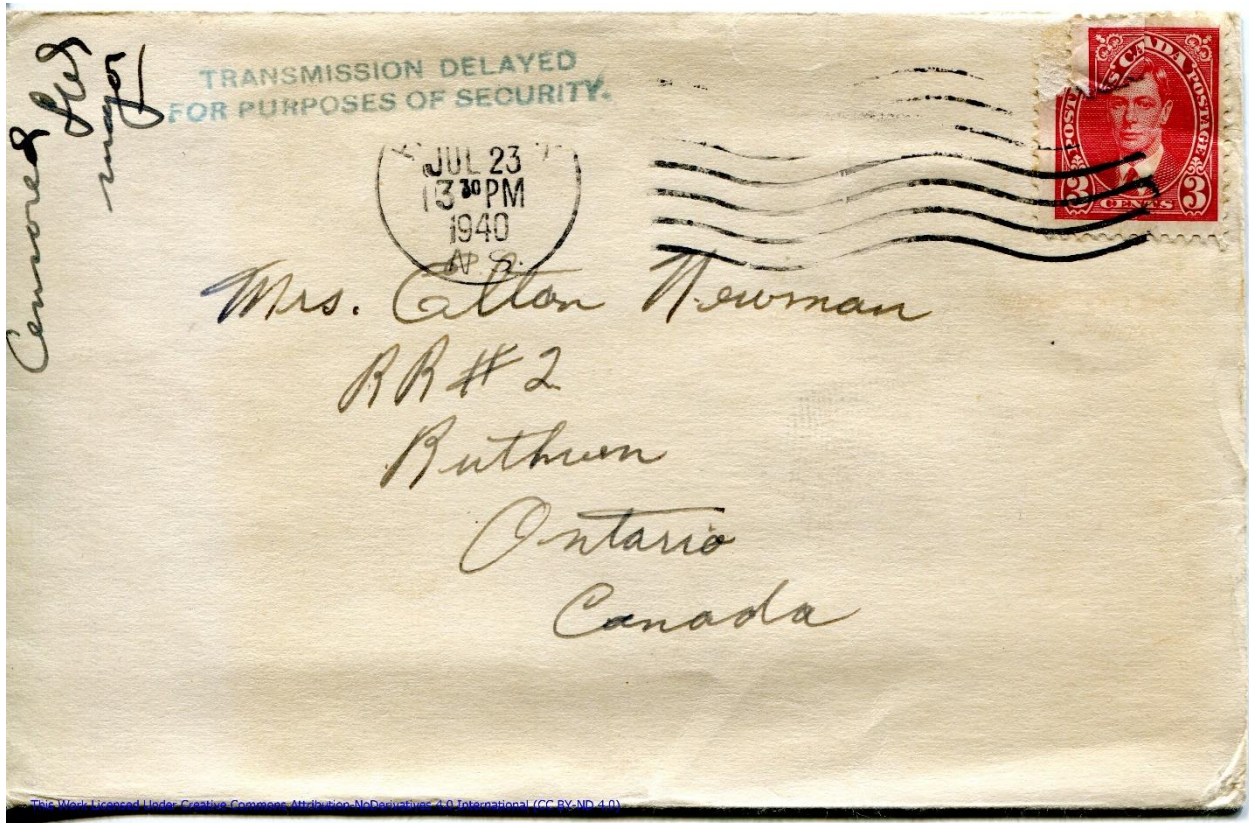
File name: www-Img-1940-07-21-1.jpg



File name: www-Img-1940-07-21-2.jpg



File name: www-Img-1940-07-21-3.jpg



LETTER TO MRS. ELTON NEWMAN - JULY 21, 1940

File name: www-Img-1940-07-21-4.jpg



## LICENSE INFORMATION

This work is made available to the general public under the Creative Commons Attribution-NoDerivatives 4.0 International (CC BY-ND 4.0)

The licensor cannot revoke these freedoms as long as you follow the license terms. You are free to:

**Share** — copy and redistribute the material in any medium or format

**Adapt** — remix, transform, and build upon the material for any purpose, even commercially.

The licensor cannot revoke these freedoms as long as you follow the license terms.

### UNDER THE FOLLOWING TERMS:

**Attribution** — You must give [appropriate credit](#), provide a link to the license, and [indicate if changes were made](#). You may do so in any reasonable manner, but not in any way that suggests the licensor endorses you or your use.

**NoDerivatives** — If you [remix, transform, or build upon](#) the material, you may not distribute the modified material.

**No additional restrictions** — You may not apply legal terms or [technological measures](#) that legally restrict others from doing anything the license permits.

The license and its terms and conditions may be viewed at: <https://creativecommons.org/licenses/by-nd/4.0/>

## ARTIFACT PROPERTIES

The properties contained within or associated with this artifact are listed below.

	Property	Value
1.	Artifact ID	Art-1940-07-21
2.	Artifact Title	Letter to Mrs. Elton Newman - July 21, 1940
3.	Artifact Type	Letter
4.	Artifact Description	Personal Letter to Mrs. Elton Newman from H.W. Manchester.
5.	Artifact Creation Date	July 21, 1940
6.	General Description/ Commentary	This artifact is a letter from Private (Pte) Harry William Manchester to his sister, Mrs. Elton Newman of Cottam, Ontario, Canada, that was written and posted from Halifax, Nova Scotia, Canada, on July 21, 1940.
7.	Origination Locale	Halifax, Nova Scotia, Canada
8.	Origination Address (for correspondence)	H. Manchester, S.X. Scots Regt., Base P.O.
9.	Origination Postmark (for correspondence)	HALIFAX JUL 23 1330 PM1940 N.S.
10.	Destination Address (for correspondence)	Mrs. Elton Newman, R.R. #2, Ruthven, Ontario
11.	Destination Postmark (for correspondence)	RUTHVEN AM JUL 31 40 ONT.
12.	Artifact Editor's Commentary	This letter was screened by military authorities under war-time censorship controls. As a result, a) Harry redacted his location from page one of the letter, and b) delivery of the letter was delayed by military authorities.
13.	Artifact Transcribed Content	Reference "Transcribed" section in this document.
14.	Artifact Categories List	Halifax, Frances Newman, 1940
15.	Content Reference (Tags)	Onnellee, Wilf, Dot, Jap, London, Ross, Marriane, La Verne, Rondeau, 305 Ferris, chicken dinners, train
16.	Categories Reference - Relationships	girl friend, sister, friend
17.	Categories Reference - Events	dance, travel
18.	Categories Reference - Locations	Halifax, London [Ontario], Rondeau [Ontario], 305 Ferris [Detroit, Michigan]

	Property	Value
19.	Categories Reference - People	La Verne [Woods], Ross [Reive], Onnellee [Reive], Wilf [Wilfred Sycamore], Dot [Dorothy - Onnellee Reive's cousin], Jap [Jasper A. Sanford], Marriane [Marion Coulter]
20.	Categories Reference - Organizations	Essex Scottish Regiment
21.	Categories Reference - Facilities	train
22.	Additional Markings	The front of the envelope is stamped: "TRANSMISSION DELAYED FOR PURPOSES OF SECURITY" and the military censor annotated the front of the envelope with "Censored [censor's initials] [illegible].
23.	Associated Artifacts	None.
24.	Number of Components (by type)	1 envelope; 2 physical sheets of paper; total of 4 image files.
25.	Artifact Component Reference	www-Img1940-07-21-1.jpg, www-Img1940-07-21-2.jpg, www-Img1940-07-21-3.jpg, www-Img1940-07-21-4.jpg,
26.	Website Artifact Image -1.jpg	www-Img1940-07-21-1.jpg,
27.	Website Artifact Image -2.jpg	www-Img1940-07-21-2.jpg,
28.	Website Artifact Image -3.jpg	www-Img1940-07-21-3.jpg,
29.	Website Artifact Image -4.jpg	www-Img1940-07-21-4.jpg,
30.	Website Artifact Image -5.jpg	N/A
31.	Website Artifact Image -6.jpg	N/A
32.	Website Artifact Image -7.jpg	N/A
33.	Website Artifact Image -8.jpg	N/A
34.	Website Artifact Image -9.jpg	N/A

\*\*\* End of Artifact Properties \*\*\*

## PUBLICATION PROPERTIES

The properties associated with the publication project for this artifact are listed below.

	Property	Value
1.	Project ID	Prj-HWM-Art-1940-07-21
2.	Publication Status	Published
3.	Publication Description File ID	Art-1940-07-21-Description.docx Artifact-1940-07-21-Description_Ver_1-1.docx
4.	Initial Publication Date	3/8/2020
5.	Publication Version Date	3/12/2020
6.	Publication Version Number	1.1
7.	Publication Author	Harry William Manchester Descendant
8.	Publication Owner	Harry William Manchester Family
9.	Publication Publisher	Harry William Manchester Family
10.	Website Description File Name	www-Art-1940-07-21-Description.pdf
11.	Publication Location	www.HarryManchester.com
12.	Website Post Title	Artifact 1940-07-21 - Letter to Mrs. Elton Newman
13.	Website Gallery Title	Artifact 1940-07-21 - Letter to Mrs. Elton Newman
14.	Website Download Title	Artifact 1940-07-21 - Letter to Mrs. Elton Newman
15.	Artifact Creation Date ISO 8601	1940-07-21T00:00:00
16.	Publication Date ISO 8601	2020-03-08T00:00:00
17.	Publication Version Date ISO 8601	2020-03-12T00:00:00
18.	Publication Website	www.HarryManchester.com
19.	Publisher's eMail Address	Editor@HarryManchester.com

\*\*\* End of Publication Properties \*\*\*

\*\*\* End of Document \*\*\*